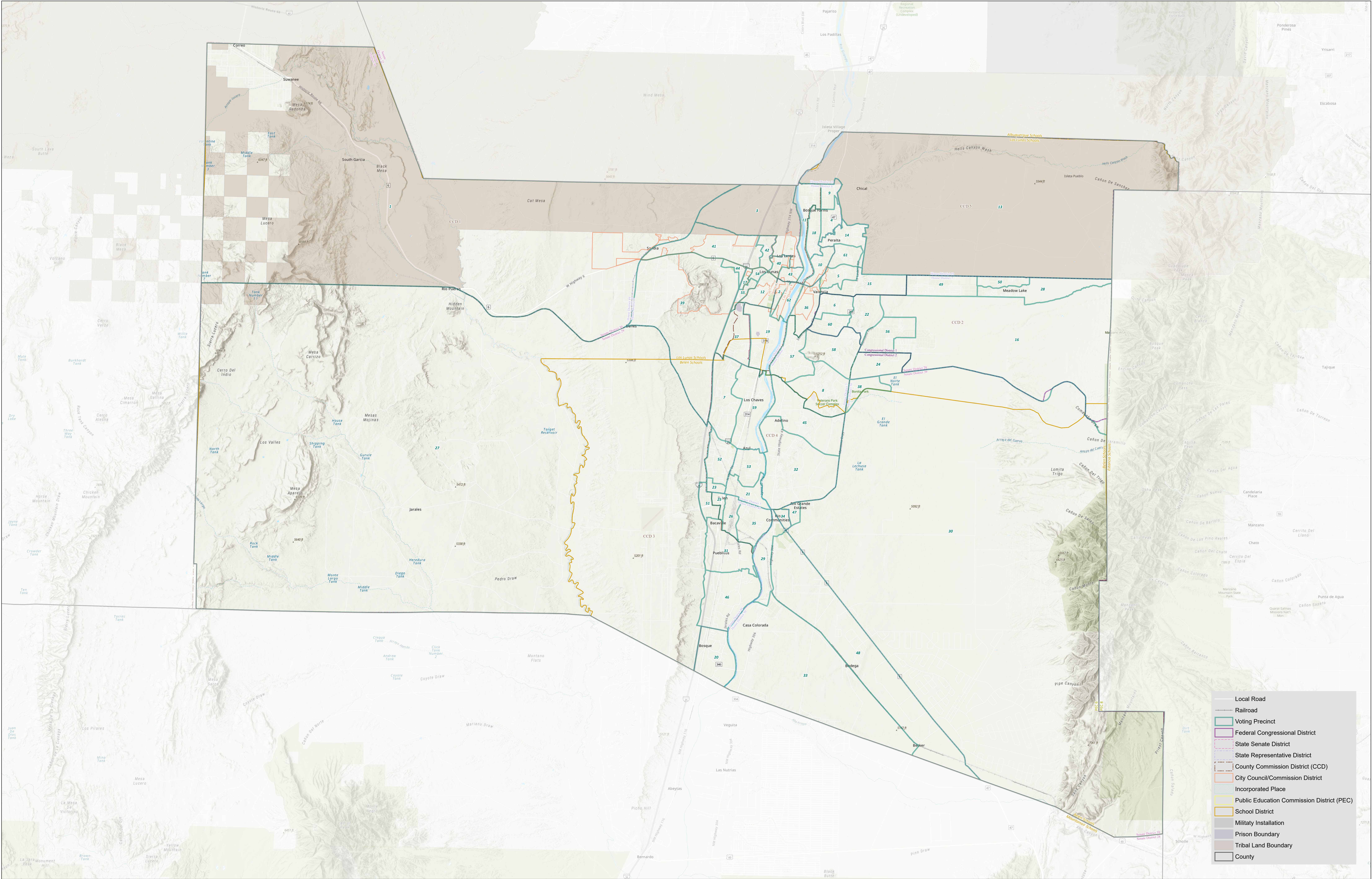
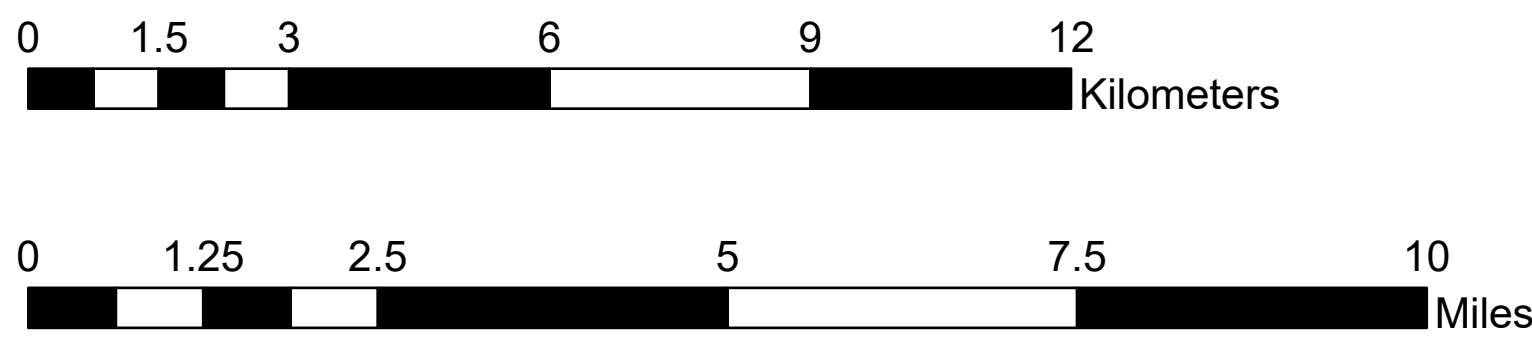
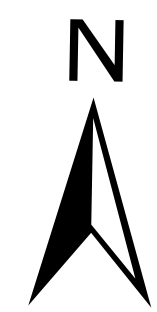


Valencia County

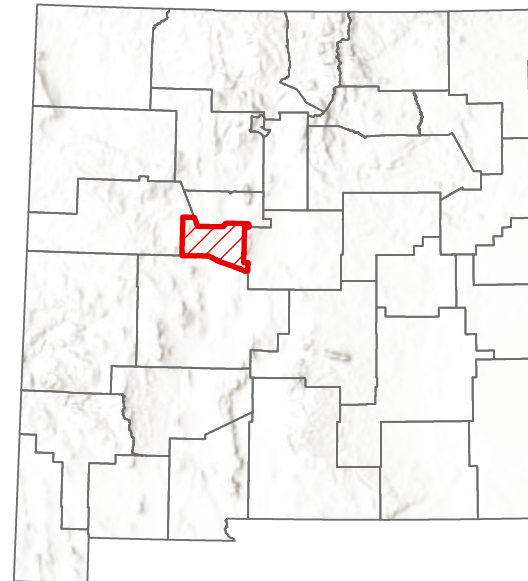


Map Produced By
Earth Data Analysis Center, The University of New Mexico
August 2021

Data Sources: US Census, Research & Poling, Inc., New Mexico Counties/Cities, Resource Geographic Information System (RGIS); **Base map:** "World Topographic Map" and "World Hillshade", by Esri, NASA, NGA, USGS, New Mexico State University, Texas Parks & Wildlife, HERE, Garmin, SafeGraph, METI/NASA, Bureau of Land Management, EPA, NPS, USDA



Spatial Reference
Name: NAD 1983 UTM Zone 13N
PCS: NAD 1983 UTM Zone 13N
GCS: GCS North American 1983
Datum: North American 1983
Projection: Transverse Mercator
Scale: 1:87,000



This standard base map was compiled in accordance with the New Mexico Election Code, Sections 1-3-1 (E) and 1-3-12 (B) by the Earth Data Analysis Center, The University of New Mexico, as contracted by the State of New Mexico, Secretary of State's Office (NMSoS).

The purpose of this map is to display geographic boundaries and features to be utilized in the adjustment of precinct boundaries. It shows the following geospatial data (as applicable): Federal Congressional Districts, State Senate Districts, State Representative Districts, voting precincts, County boundaries, County Commission Districts, City Council Districts, Public Education Commission Districts, School Districts, Tribal Land boundaries, US Census incorporated places, military installations, prison boundaries, local roads, and railroad tracks. Esri's "Topographic" base map serves as background, providing a view of topographic features including mountains, rivers/streams, and major roads with labels.

Disclaimer: The data in this map is believed to be accurate and current. The map is provided "AS-IS", without warranties of any kind, either expressed or implied. The Earth Data Analysis Center, The University of New Mexico assumes no legal liability or responsibility for the accuracy, completeness, or usefulness of the map, or for consequential and indirect damages arising from its use.