



Rider Alert: Blue and Red Routes Service Changes (Blue Route and Red Route Buses in Santa Fe, NM)

for November 4, 2024

October 28, 2024

Due to construction on Sheridan Avenue, NMDOT Park & Ride will be unable to serve the Sheridan TC Stop until the construction projects in the area are completed in 2027.

The schedule changes are as follows:

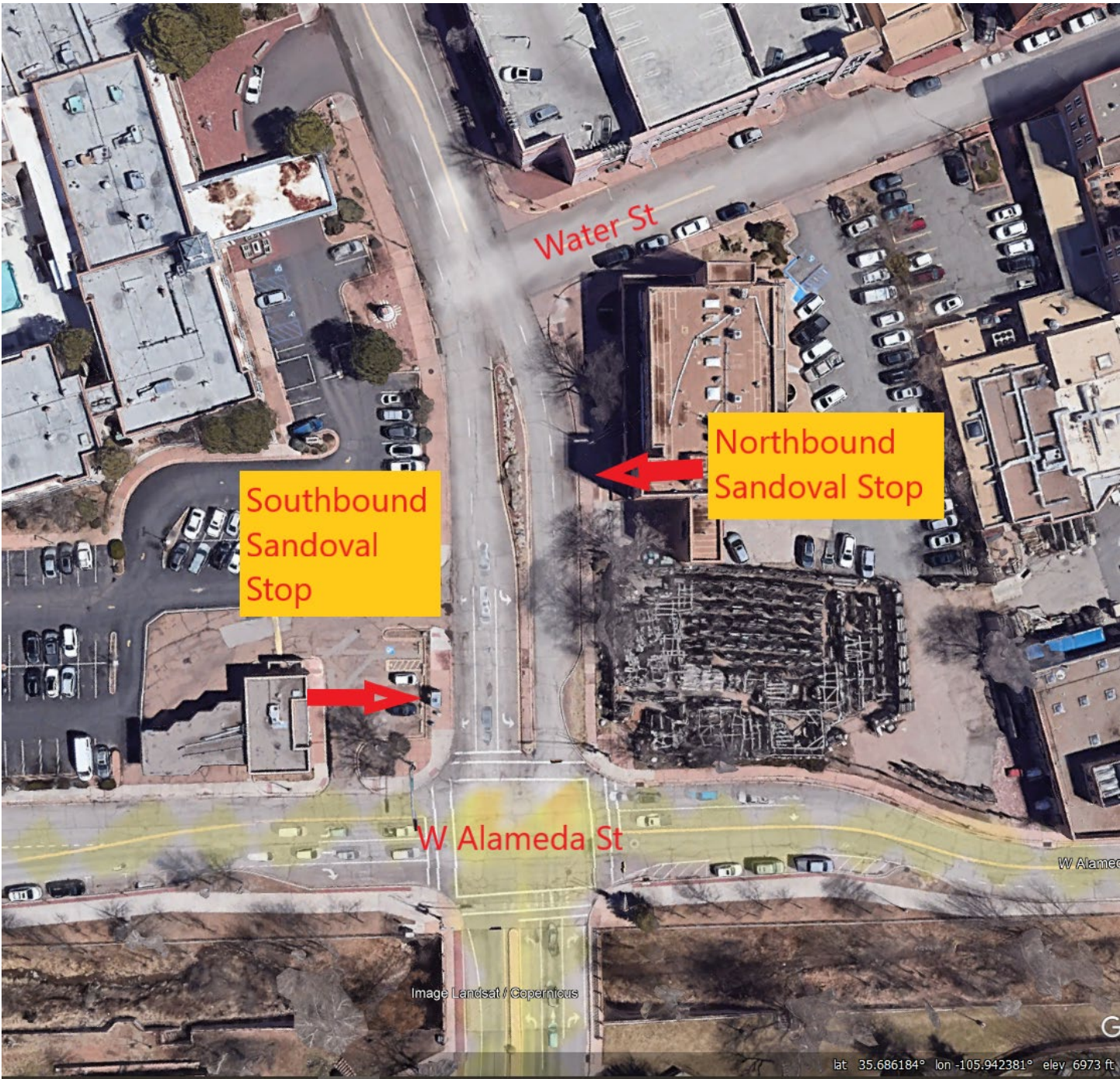
- A new stop created on Sandoval St. between West Alameda and Water street
- A new stop created on Sandoval St. near the corner of West Alameda.

The bus times will remain the same for the Sandoval Street stops as they were for the Sheridan TC stop times.

The elimination of the Sheridan TC stop will be re-evaluated once construction has been completed.

The final schedule will be distributed on buses and at [NMDOT Park & Ride | NMDOT](#) and will become effective November 4, 2024.

To subscribe to NMDOT Park and Ride email system and receive future Rider Alerts and information on schedule changes, send an email to nmparkandride@state.nm.us with the word SUBSCRIBE in the subject heading.



To subscribe to NMDOT Park and Ride email system and receive future Rider Alerts and information on schedule changes, send an email to nmparkandride@state.nm.us with the word SUBSCRIBE in the subject heading.

PURPLE ROUTE Northbound						
Albuquerque			Bernalillo	Santa Fe	Los Alamos	
Alvarado TC	Montaño TC	Los Ranchos Journal Center	US-550 Station	NM-599 Station	TA-3 TC (LANL)	Mesa Library
3:55am	4:10am	4:18am	4:36am	5:11am ^^	6:11am *	6:17am
—	—	—	—	5:55am	6:55am	7:01am
—	—	—	—	7:31am	8:31am	8:37am
—	—	—	—	7:03pm	8:03pm	8:09pm

Southbound		
Los Alamos		Santa Fe
Mesa Library	TA-3 TC (LANL)	NM-599 Station
6:17am	*6:11am	7:23am
3:19pm	3:27pm	4:32pm
4:07pm	4:15pm	5:20pm
5:47pm	5:55pm	7:00pm

* Board at TA-3 at 6:11am for southbound bus to NM-599 Rail Runner Station.
 ^^ Connects with the Purple Route Shuttle, with stops at the South Capitol Station and the Santa Fe Depot. (See Santa Fe Shuttles Schedule)

Health and Safety Precautions

- The buses are disinfected by use of a fogging system daily. In addition, all “touch areas” are wiped down before the morning and afternoon runs.
- If you are sick, please stay home and do not ride the bus/public transportation.
- Eating and drinking is always prohibited on the bus.
- Each vehicle is equipped with hand sanitizing dispensers in the front and back sections of the passenger cabin.
- Operating on fresh air intake, the cabin is continually cycling fresh air.
- Updates and full procedures can be found at: www.nmparkandride.com

The New Mexico Department of Transportation operates its programs and services without regard to race, color, national origin, and disability, in accordance with Title VI of the Civil Rights Act and the Americans with Disabilities Act. To find out more about our nondiscrimination obligations, to file a complaint, or to request this information in another language, please contact us at NMDOT ADA Title VI Coordinator, 1570 Pacheco Street, Suite A-10, Santa Fe, NM, 87505 or 1-800-554-0936 or (505) 470-6739 or email: ADA.TitleVI.Coordinator@dot.nm.gov.



Days of Service: NMDOT Park & Ride operates on all weekdays, except for designated state holidays: New Years Day, Martin Luther King Day, Memorial Day, Juneteenth, Independence Day, Labor Day, Columbus Day, Veterans Day, Thanksgiving Day, the Friday following Thanksgiving Day, and Christmas Day. Exceptions: Designated state holidays that fall on Saturday will be observed on Friday and those that fall on Sunday will be observed on Monday.

Standards and Code of Conduct: For NMDOT Park & Ride’s Standards and Code of Conduct, go to: www.nmparkandride.com

Connections with New Mexico Rail Runner Express: A system-wide NMDOT Park & Ride Monthly Pass (\$150) is valid for use on the New Mexico Rail Runner Express (NMRX). For a current train schedule, go to: www.riometro.org

Santa Fe Place Shuttles are scheduled to connect with three morning northbound arriving and three afternoon southbound departing the New Mexico Rail Runner Express trains at the NM-599 Station. Rodeo Park Shuttles are scheduled to meet three morning northbound arriving and three afternoon southbound departing New Mexico Rail Runner Express trains at the South Capitol Station. Location descriptions for all shuttle stops can be found at: www.nmparkandride.com

Schedules and Stop Locations: Schedules and stop location descriptions for NMDOT Park & Ride and the Santa Fe Shuttles can be found at www.nmparkandride.com

Fares: • Purple, Blue, Orange: \$3.00 one-way, \$90 monthly pass; • Red, Green: \$2.00 one-way, \$60 monthly pass; • System-wide monthly pass (Rail Runner and Park & Ride): \$150 • Exact fare is required for one-way trips • Monthly Passes are available on line at www.nmparkandride.com

Monthly Pass Flexibility: •Blue Route Monthly Pass holders may ride on the Red Route. •Red Route Monthly Pass holders may ride on the Blue Route with an additional \$1.00 fare per trip. A mobile ticketing option is being offered through Token Transit. Visit: <https://tokentransit.com/app>

PG RealTime: Visit <http://nm.dotparkandride.transloc.com/> for real-time GPS bus tracking and schedule information.

NORTHERN ROUTES SCHEDULES

Effective July 18, 2022



For more information:
www.nmparkandride.com
 email: park.andride@dot.nm.gov
 (866) 551- RIDE (7433) or
 (505) 424-1110

NMDOT Park & Ride is a General Public Transportation Service of the New Mexico Department of Transportation

NORTHERN ROUTES
 BLUE ROUTE · GREEN ROUTE · ORANGE ROUTE · PURPLE ROUTE · RED ROUTE

To subscribe to NMDOT Park and Ride email system and receive future Rider Alerts and information on schedule changes, send an email to nmparkandride@state.nm.us with the word SUBSCRIBE in the subject heading.

GREEN ROUTE					
Westbound					
Española	Los Alamos				Mesa Library
Transit Center	TA-3 TC (LANL)	Medical Center	Ashley Pond	Knecht St.	Mesa Library
5:42am	6:12am	—	—	—	—
6:00am	6:30am	6:35am	6:36am	6:37am	6:53am
6:32am	7:02am	7:07am	—	—	7:12am
6:52am	7:22am	7:27am	7:28am	7:29am	7:45am
7:33am	8:03am	8:08am	8:09am	8:10am	8:26am
2:28pm	2:58pm	3:03pm	—	—	3:07pm
2:47pm	3:17pm	3:22pm	3:23pm	3:24pm	3:40pm
3:30pm	4:00pm	4:05pm	—	—	4:10pm
3:47pm	4:17pm	4:22pm	4:23pm	4:24pm	4:40pm
4:20pm	4:50pm	4:55pm	—	—	5:00pm
4:50pm	5:20pm	5:25pm	5:26pm	5:27pm	5:43pm

GREEN ROUTE			
Eastbound			Española
Los Alamos		TA-3 TC (LANL)	Transit Center
Mesa Library	Medical Center	TA-3 TC (LANL)	Transit Center
—	—	6:12am	6:42am
6:53am	6:58am	7:03am	7:33am
7:12am	7:17am	7:22am	7:52am
7:20am	7:25am	7:30am	8:00am
7:45am	7:50am	7:55am	8:25am
8:26am	8:31am	8:36am	9:06am
3:07pm	3:12pm	3:17pm	3:47pm
3:40pm	3:45pm	3:50pm	4:20pm
4:10pm	4:15pm	4:20pm	4:50pm
4:50pm	4:55pm	5:00pm	5:30pm
5:43pm	5:48pm	5:53pm	6:23pm

Note: To head eastbound from Ashley Pond or Knecht St. board the westbound bus and stay on at Mesa Library.

LEGEND- for all Schedules
 ^ : Connects with the Rodeo Park Shuttle
 TC : Transit Center

RED ROUTE						
Southbound						
Española	Pojoaque	Santa Fe				
Transit Center	Cities of Gold	Santa Fe	Sandoval Street	Capitol	Alta Vista St.	South Capitol
5:40am	5:57am	—	6:22am	6:32am	6:42am	6:43am
6:23am	6:40am	—	7:05am	7:15am	7:25am	7:26am^
8:00am	8:17am	—	8:42am	8:52am	9:02am	9:03am
5:27pm	5:44pm	6:04pm	—	6:14pm	6:24pm	6:25pm
6:30pm	6:47pm	7:07pm	—	7:17pm	7:27pm	7:28pm

RED ROUTE						
Northbound						
Santa Fe					Pojoaque	Española
South Capitol	Alta Vista St.	Capitol	Sandoval Street	Santa Fe Lot	Cities of Gold	Transit Center
5:25am	5:26am	5:36am	—	5:46am	6:08am	6:23am
6:43am	7:04am	7:14am	—	7:24am	7:46am	8:01am
4:24pm^	4:25pm	4:35pm	4:45pm	—	5:12pm	5:27pm
5:27pm^	5:28pm	5:38pm	5:48pm	—	6:15pm	6:30pm
7:28pm	7:29pm	7:39pm	7:49pm	—	8:16pm	8:31pm

ORANGE ROUTE							
Southbound							
Las Vegas		San Jose	Rowe	Santa Fe			
Highlands University	D4 Lot	Exit 319	Rowe Lot	Alta Vista St.	South Capitol Station	Capitol	
5:00am	5:11am	5:36am	5:51am	6:21am	6:22am^	6:32am	
6:00am	6:11am	6:36am	6:51am	7:21am	7:22am^	7:32am	
5:42pm	5:31pm^	6:07pm	6:22pm	6:52pm	6:53pm	7:03pm	
6:50pm	6:36pm^	7:15pm	7:30pm	8:00pm	8:01pm	8:11pm	

ORANGE ROUTE							
Northbound							
Santa Fe		Rowe	San Jose	Las Vegas			
Capitol	South Capitol Station	Alta Vista St.	Rowe Lot	Exit 319	D4 Lot	Highlands University	
4:28am	4:38am	4:39am	5:09am	5:24am	5:49am	6:00am	
4:10pm	4:20pm^	4:21pm	4:51pm	5:06pm	5:31pm^	5:42pm	
5:23pm	5:12pm^	5:13pm	5:56pm	6:11pm	6:36pm^	6:47pm	

* Board at Las Vegas D4 Lot at 5:31pm or 6:36pm for southbound bus to Santa Fe.

BLUE ROUTE									
Northbound									
Santa Fe			Pojoaque	Los Alamos					
South Capitol Station	Capitol	Sandoval Street	Santa Fe Lot	Cities of Gold	TA-3 TC (LANL)	Medical Center	Ashley Pond	Knecht St.	Mesa Library
5:25am	—	—	5:35am	5:57am	6:20am	6:23am	—	—	6:30am
5:28am	—	—	5:38am	6:00am	6:23am**	6:26am**	—	—	6:33am
6:03am	—	—	6:13am	6:35am	7:02am	7:05am	7:06am	7:07am	7:23am
6:45am	6:55am	—	7:05am	7:27am	7:50am	7:53am	7:54am	7:55am	8:11am
7:47am	—	—	7:57am	8:19am	8:42am	8:45am	8:46am	8:47am	9:03am
2:08pm	2:18pm	2:28pm	—	2:53pm	—	—	—	—	3:28pm
2:45pm	2:55pm	3:05pm	—	3:30pm	3:53pm	3:56pm	—	—	4:03pm
3:05pm	3:15pm	3:25pm	—	3:50pm	4:13pm	4:16pm	—	—	4:23pm
3:32pm	3:42pm	3:52pm	—	4:16pm	4:38pm	4:41pm	4:42pm	4:43pm	5:00pm
4:15pm^	4:25pm	4:35pm	—	5:00pm	5:23pm	5:26pm	—	—	5:33pm
4:52pm	5:02pm	5:12pm	—	5:37pm	—	—	6:06pm	6:07pm	6:23pm
—	—	—	—	—	—	—	—	8:14pm	8:30pm

BLUE ROUTE									
Southbound									
Los Alamos			Pojoaque	Santa Fe					
Mesa Library	Medical Center	TA-3 TC (LANL)	Cities of Gold	Santa Fe Lot	Sandoval Street	Capitol	South Capitol Station	NM 599 Station	
6:30am	6:34am	6:40am	—	—	—	—	7:30am^	—	
6:33am	—	—	7:03am	—	7:27am	7:37am	7:47am	—	
7:23am	7:27am	7:31am	7:57am	—	8:21am	8:31am	8:41am	—	
8:11am	8:15am	8:19am	8:45am	—	9:09am	9:19am	9:29am	—	
9:03am	9:07am	9:11am	9:37am	9:57am	10:06am	10:16am	10:26am	—	
3:28pm	3:32pm	3:39pm	4:05pm	4:25pm	—	—	4:35pm	—	
4:23pm	4:27pm	4:34pm	5:00pm	5:20pm	—	—	5:30pm	5:50pm	
5:00pm	5:04pm	5:11pm	5:37pm	5:57pm	—	6:07pm	6:17pm	—	
—	—	5:39pm	—	6:20pm	—	—	6:30pm	6:50pm	
6:23pm	6:27pm	6:32pm	6:58pm	7:18pm	—	—	7:28pm	—	
8:30pm	8:34pm	8:39pm	9:05pm	9:25pm	—	—	9:35pm	—	

Note: To head southbound from Ashley Pond or Knecht St. board the northbound bus and stay on at Mesa Library.
 ** Board at TA-3 (6:23am) and Los Alamos Medical Center (6:26am) for southbound bus to Santa Fe.

To subscribe to NMDOT Park & Ride emails for Rider Alerts and schedule changes, send an email to park.andride@dot.nm.gov with the word 'SUBSCRIBE' in the subject heading and list the routes you want to follow.
 The New Mexico Park and Ride's Rider Alert system is offering a new SMS texting platform. To receive Rider Alerts with the new rider alert platform, please text your preferred route to **833-458-4068** and include the route (BLUE, GREEN, RED, ORANGE, PURPLE, RODEO PARK SHUTTLE, SANTA FE PLACE SHUTTLE, NATIONAL GUARD/CORRECTIONS SHUTTLE, ANAYA COMPLEX SHUTTLE, SILVER, GOLD) you wish to receive alerts for.

To subscribe to NMDOT Park and Ride email system and receive future Rider Alerts and information on schedule changes, send an email to nmparkandride@state.nm.us with the word SUBSCRIBE in the subject heading.